

DRAWING NUMBER
22-55

PLAT ONE LOXAHATCHEE HOMES

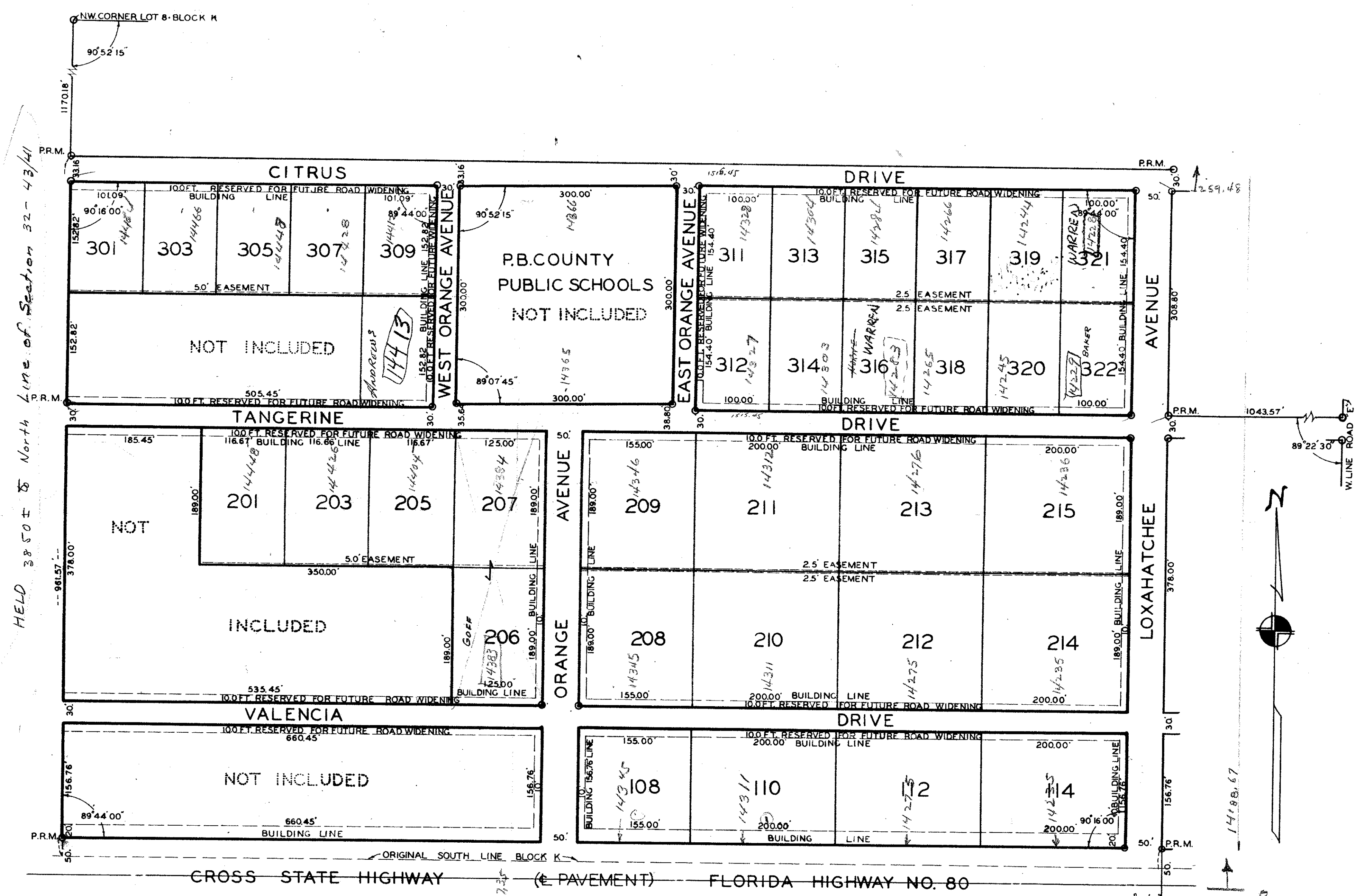
A RESUBDIVISION OF THE WEST 1515.45 FT. OF THE SOUTH 961.57 FT., LOT 8, BLOCK K, LOXAHATCHEE GROVES
BEING IN SECTION 32, NORTH OF THE WEST PALM BEACH CANAL, TOWNSHIP 43 SOUTH, RANGE 41 EAST
AS RECORDED IN PLAT BOOK 12, PAGE 29

PALM BEACH COUNTY, FLORIDA
JANUARY 1949 SCALE 1"=100'

E. ELLIOTT GROSS
REGISTERED ENGINEER & SURVEYOR

55

STATE OF FLORIDA
COUNTY OF PALM BEACH
This plat was filed for record on January 13, 1949
at 9:35 A.M.
in the presence of the following witnesses:
J. M. Boyd, County Engineer
Maryann T. Keller, Clerk
Maryann T. Keller



STATE OF FLORIDA
COUNTY OF PALM BEACH
KNOW ALL MEN BY THESE PRESENTS, that LOXAHATCHEE DEVELOPERS, INC., a Florida Corporation, the owner of the tract of land lying and being in Section 32, North of the West Palm Beach Canal, Township 43 South, Range 41 East, Palm Beach County, Florida, shown on the attached plat as LOXAHATCHEE HOMES, and more particularly described as follows, to wit:
The West 1515.45 ft. of the South 961.57 ft. of Lot 8, Block K, according to plat thereof entitled Replat of Loxahatchee District Subdivision, LOXAHATCHEE GROVES, and recorded in Plat Book 12, Page 29, Palm Beach County Public Records; and also described as: Beginning at a point in the West line of said Lot 8, Block K, 1170.18 ft. southerly from the northwest corner of said Lot 8; Thence continuing southerly along the said West line, a distance of 961.57 ft., to the southwest corner of said Lot 8; Thence easterly along the South line of said Lot 8, a distance of 1515.45 ft.; Thence northerly and parallel with the said West line Lot 8, a distance of 961.57 ft.; Thence westerly and parallel with the said South line Lot 8, a distance of 1515.45 ft., more or less, to the point of beginning.
has caused the same to be surveyed and platted as shown hereon, and does hereby dedicate to the perpetual use of the public the Drives, Avenues and Highway as shown hereon, reserving, however, unto itself, its successors, assigns or legal representatives, the reversion or reversions thereof whenever the same shall be abandoned by the public or discontinued by law.
IN WITNESS WHEREOF, it has caused these presents to be signed by its President, attested by its Secretary, and its Corporate Seal to be affixed hereunto with the authority of its Board of Directors this 13th day of January, A. D. 1949.

LOXAHATCHEE DEVELOPERS, INC.

By: *Geo. F. Bense*
President

Attest:
By: *Bernie Bense*
Secretary



1000-578

STATE OF FLORIDA
COUNTY OF PALM BEACH
I HEREBY CERTIFY that on this day personally appeared before me, an officer duly authorized to administer oaths and take acknowledgments, Geo. F. Bense, President and G. Bernie Bense, Secretary of Loxahatchee Developers Inc. to me well known and known to me to be the individuals described in and who executed the foregoing dedication, and they acknowledged before me that they executed the same as such officers of said corporation for the purposes therein expressed and that their act and deed was the act and deed of said corporation.
WITNESS my hand and official seal of West Palm Beach, County of Palm Beach, and State of Florida, this 13th day of January, A. D. 1949.

STATE OF FLORIDA
COUNTY OF PALM BEACH
I HEREBY CERTIFY that the plat shown hereon as LOXAHATCHEE HOMES is a true and correct representation of a survey, made under my direction, of the foregoing described property and that said survey is accurate to the best of my knowledge and belief, and that permanent reference monuments (P.R.M.) have been placed as required by law.

Approved: January 13, A.D. 1949
Board of County Commissioners.

By: *J. M. Boyd*
County Engineer, Palm Beach County, Florida

E. Elliott Gross
Registered Land Surveyor
Florida Certificate No. 1234

Subscribed and sworn to before me this 13th day of January, A. D. 1949.

My commission expires: December 21, 1951

My commission expires: December 21, 1951

Loxahatchee Homes

DRAWING NUMBER

DRAWING NUMBER

DRAWING NUMBER

